

# “ABSURDE” »

A show by

ANTON LACHKY



**TECHNICAL SHEET**

**Technical contact:** Philips Jean-François  
[jefphilips@gmail.com](mailto:jefphilips@gmail.com)

Tel: +32 (0)497 10 57 83

**Logistics contact:** Souheil Jeddaoui  
[administration@antonlachkycompany.com](mailto:administration@antonlachkycompany.com)

(Arrival time of dancers, transport, accommodation etc.)

## **1- GENERAL:**

The team consists of:

8 artists

1 technician (stage/sound/light)

Duration of the show: 1 hour

As the team travels by train and car, please provide a parking space.

## **2- THE STAGE**

Ideal stage: 14m from wall to wall and 12m deep

Maximum height: 7m (light carriers at 6.5m)

Minimum height: 5m under light poles

Desired audience distance: 2.5m from the front of the stage

These are the ideal dimensions, but we can adapt to other dimensions.

If you have any questions or concerns, please do not hesitate to contact us.

It must be possible to darken the room completely. Any emergency lighting must not under any circumstances illuminate the stage.

### **To be provided by the host venue:**

1. Italian hang-rail system (see plan)(4 rows) + backdrop curtain + frieze
2. 10m/10m white dance floor (clean)  
This is the ideal scenography, but we can adapt to other situations.
3. 4 black chairs

### **3- LIGHTING** (plan on request)

Pre-assembly is desirable.

Pre-assembly is done on the day of the show if it takes place after 17:00.

If the show takes place before 17:00, pre-assembly is ideally done the day before.

If you do not have the necessary equipment, please contact us.

Adaptation is possible.

### **To be supplied by the venue:**

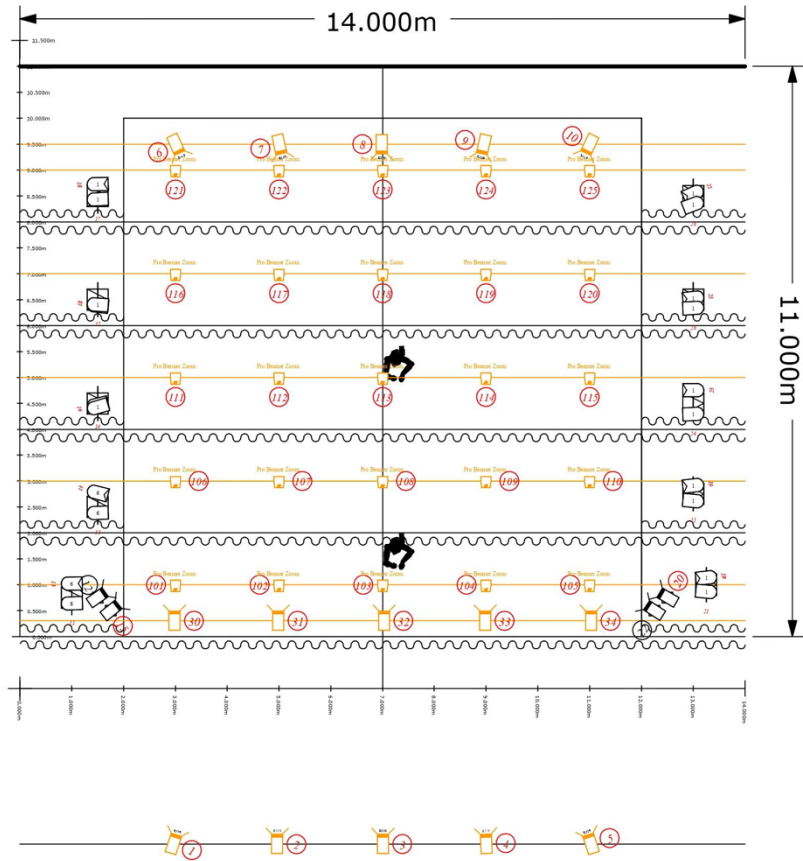
- Dimmers: 40X min 10A (identical curves)
- 19X PC 1kw + shutters
- 4X cut-out 1kW type 614 **sx**
- 8X PAR 64 CP62
- 8x PAR 64 CP95

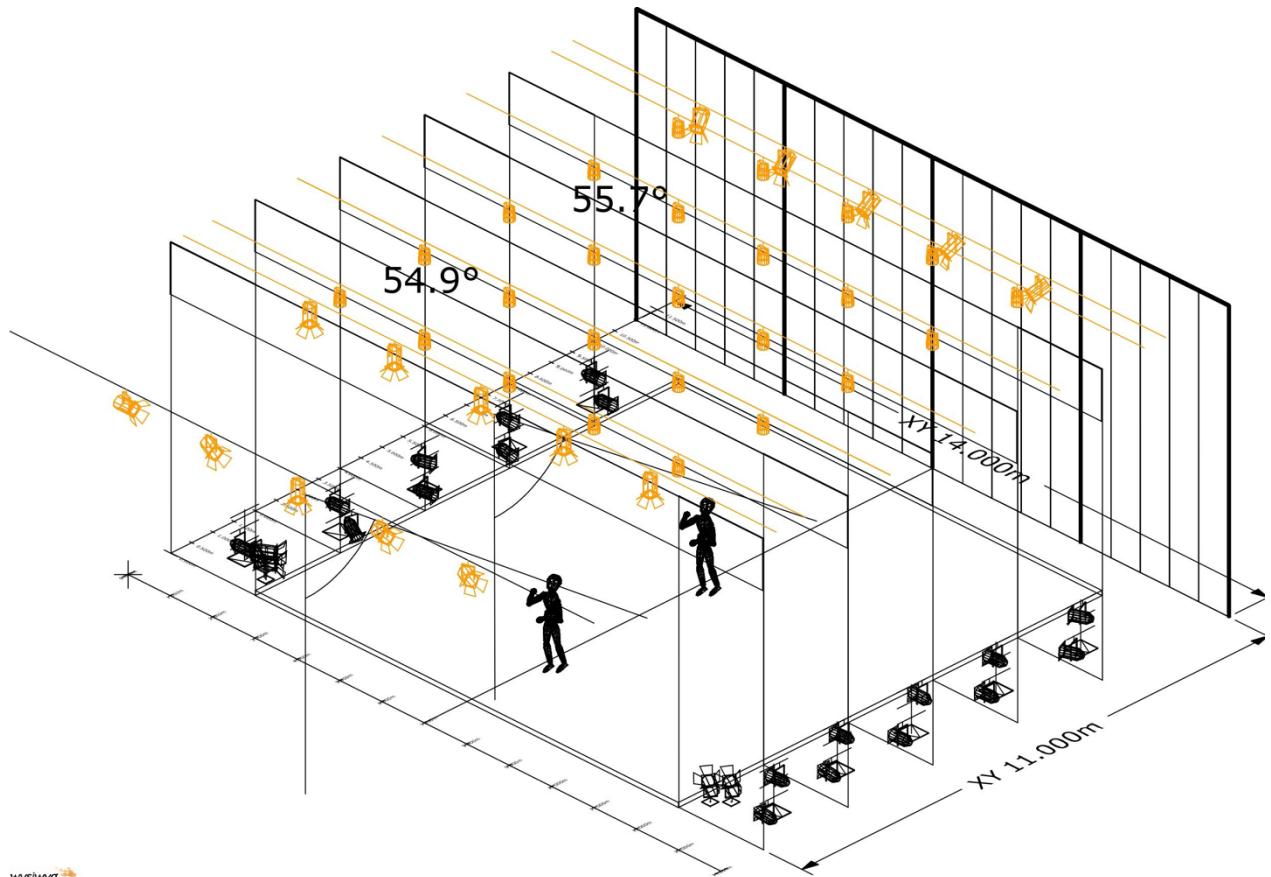
Each spotlight is fitted with filter holder, shutter and safety sling

-25 x PAR led **rgbw** with zoom or equivalent

**-1 bruisard, hazer, (tour hazer or loock unique 2,1)**

- Filters (see plan)
- 8 X scale h170/100/50 or projector base
- Dimmable room lighting from the light console
- The company is bringing its own light console and computer, please provide 2 **dmx** universes, 1 for the traditional and the 2nd for the zooms





## 4- SOUND

The control room must be in the auditorium and facing the stage. Sound and lighting control to be joined together.

**To be supplied by the venue:**

### Speakers

- One **plan face** professional stereo patches 1 and 2
- One **plan de retour face et lointain** monitor patches 3 and 4
- 1 PC or Mac to read audio files

### Console:

- Midas M32 or Yamaha c11.

## 5- PLANNING

This schedule does not take into account the host venue's customs and practices.

J -0					
Times	Notes	Staffing required			
		Lighting	Sound	Stage	h
08.30-11.00	Pre-assembly	3	2	2	
11.00-12.00	Focus	3			
12.00-13.00	Clean	2		2	
13.00-14.00	Lunch				
14.00-17.00	Rehearsal	1	1	1	1
17.00-18.00	Clean			1	
18.00-19.00	Break				
20.00	Show	1	1	1	
21.30	Dismantling	2		2	

## 6- MISCELLANEOUS

- A communal dressing room for the artists, which can be locked.
- Catering for the entire team (fruit, biscuits, chocolates, coffee, tea, cola and water).
- As we wish to work in an environmentally friendly manner, we would like to make a few requests. We will, of course, accept traditional catering if your organisation has difficulty meeting these.
- Catering that is zero-waste, local, seasonal and, if possible, organically grown and vegetarian (We are aware of the financial impact of our request and would like to make it clear that we prefer quality over quantity). We prefer a water fountain to small water bottles.

- If eco-friendly catering proves impossible, please provide a selection of meat and vegetarian sandwiches, dried fruit, fresh fruit, mineral and sparkling water, coffee and fruit juice.
- One of the dancers is lactose-intolerant.

**Dancers' diets:**

Cassandre: vegetarian

Yamuna: omnivore but no red meat (fish and chicken ok)

Dunya: vegetarian, but fish ok. NO CHEESE!

Evelyne: lactose-intolerant omnivore

Lysanne: pescatarian

Pjotr: omnivore

Nino: omnivore

Massimiliano: omnivore

Jeff: omnivore

- One technical production workspace with internet access.

Any adaptation of this technical sheet will only be made in agreement with the touring technical team.

We would be grateful if you could recommend a physiotherapist and chiropractor in your town.

Thank you for providing ice (or frozen peas) in a freezer available in the dressing rooms.

Please do not hesitate to contact us if you have any problems.